



- Small
- Nocturnal
- Arboreal
- Dorsum yellowish tan or yellow usually with dark brown markings
- Dorsal pattern of individuals highly variable

- Small
- Nocturnal
- Arboreal
- Dorsum yellowish tan with a pair of dark brown lines
- A narrow lateral brown stripe from nostril to rear end bordered above by a light line

Veined Treefrog
Dendropsophus phlebodes

Mud Puddle Frog
Engystomops pustulosus

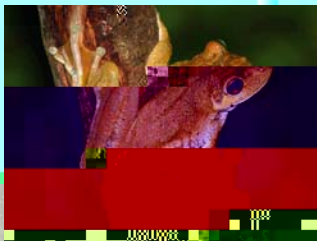
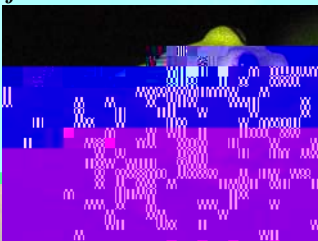


- Small
- Nocturnal
- Arboreal
- Dorsum yellowish with darker dashed or interconnected lines
- Thighs yellow

- Medium
- Diurnal/Nocturnal
- Terrestrial
- Dorsal skin warty, gray-brown, usually with light mid-dorsal diamond mark
- Venter white with black flecks

Fleischmann's Glass Frog
Hyalinobatrachium fleischmanni

Gladiator Frog
Hypsiboas rosenbergi



- Small
- Nocturnal
- Arboreal
- Membrane covering heart is white
- Bones white

- Large
- Nocturnal
- Arboreal
- Hands have basal webs
- Lower eyelid lightly pigmented in the base and unmarked